



Cost-effective solution tool for automated recording and playout of branding programs and scenes in a customizable user interface.

MediaController Tool

Automated management of controlled scenes and branding programs

Operational benefits

Hierarchical Approach

- A program can be overlaid with one or more scenes which are made up of a set of nodes played simultaneously. A program is also allowed to run on its own with no overlaid scene

Bypass

- MCT empowers you on MediaServerG to play out live SDI signals directly without having to go through recording first

Easy to Use

- The simple, easy-to-use interface of the MCT puts tools right at the user's fingertips

Business Continuity

- Functions as the emergency playout solution making it perfectly suitable for disaster recovery sites

Efficient

- Switch quickly between day-to-day tasks with Profile selections

Cost-effective

- Control your MediaClient codecs using a single application. No database or complex installation and configuration is required

Versatile

- Start a recording, then switch to the playout interface to begin trimming or creating a playlist

Purpose-built

- The MCT is compatible with both XOR MediaServer and XOR MediaClient

The XOR MediaController Tool (MCT) is a software application that helps broadcasters to control their MediaServer or MediaClient codecs across the network. With this MediaController Tool, broadcasters can perform single or multi-cam ingest, control playback of a playlist, and do clip trimming operations. The MCT allows operators to remotely control the record and playback on XOR servers by using various user profiles defined in MCT. Moreover MCT can be resorted as an alternative to VTR backup, ensuring business continuity. Besides by embedding in MSVG channel-in-box running as an automation control tool, MCT is able to direct MSVG playout of controlled scenes and branding programs.

Scene & Program Mode

With MCT on hand you have the total control of MSVG's channel branding system. MCT offers two practical approaches for 3D interactive graphics effects overlay: by program controlled mode, or by scene controlled mode. You can choose the program controlled mode for operational simplicity by associating one or more specific scenes with a particular clip for fixed overlaid effects on that particular clip. Or you can take full advantage of the scene controlled mode for operational flexibility by changing selection of scenes on the fly for different overlaid graphics every time a clip is played. In addition such operations as listing, playing, stopping playing, and current status

querying of scenes and programs are provided by MCT as well.

In Tandem with MSVG as Automation Control

MCT supports and manages channel branding on MediaServerG by unlimited number of layers of graphics playout control. Turning off/on rendering of all scenes belonging to a specific layer during playout is made quick and easy simply by turning that layer off/on in MCT.

Pocket-sized Versatility

The MCT offers two primary working areas, Recording and Playback, each with a comprehensive toolset enabling recording, clip editing, and playout. From the recording tab, a single control panel is used to start, stop, and schedule a recording. Scheduling recordings means broadcasters can establish a recording playlist and move on to other tasks in their queue. The Playback tab enables users to playback recording, sort these items, and establish a playlist of items for later use. Users of the MCT can select an item or queue of items to begin recording and then switch to the playback tab to complete other activities. The MCT simplifies and speeds up the essential functions of a broadcast operation needed on a daily basis.

Studio Workflow

The MCT also offers studio production capabilities that can prove very helpful to broadcasters

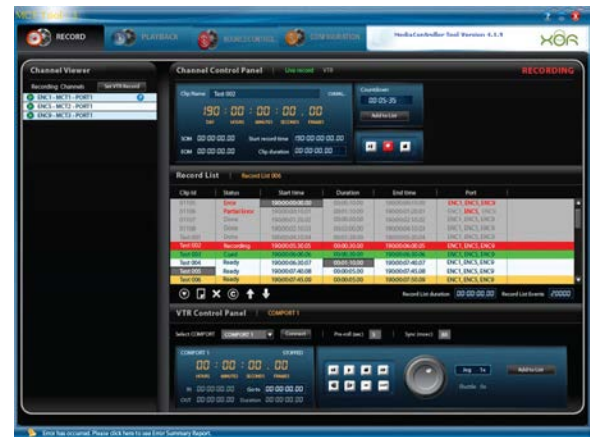
who are in need of a quick but effective solution to replace their VTR. With the MCT, content from multiple cameras can be recorded simultaneously, all from the same control panel. These multi-camera recordings are available as separate clips that can be edited from the playback tab, during ingest. Once clips are recorded and edited, a playlist can be created from the best camera angles of the program and be played to air immediately. This quick turnaround time is valuable to broadcasters when time is of the essence, such as in news and sports productions.

Loaded with Features

MCT allows for inserting clip or even live events between OnAir and Cued events in production playlist, a must-have for TV stations featuring live sports events. Scheduling of playout at specific time on specific date is also made possible by supporting playlist of events extending beyond 24 hours. What's more, the language of clip name is tailored to different users of this tool, and playlist's column headings are customizable. The off-the-air pseudo-program can really relieve you from all the chores for broadcasting station signing off for the day. The day-ender pseudo-program is scene-based and automated in daily production playlist trailing all of the rest regular play events.



Configuration Tab



Record Tab

